

M3 ORANGE Single-Slot Cradle

User Guide



Product Number:
A-1CR-US0D-060-R00,
A-1CR-U0ED-060-R00

Compatible Device(s):
M3 ORANGE

Version 2.2
Released in March 2013

Contents

Copyright and Agreement 3

Notice 4

Warnings and Cautions for Safety. 6

1. Checklist 8

2. Usage 9

Description 9

Specification 11

3. FAQ and Troubleshoot 13

Charging 13

PC Connection 14

Serial Communications..... 15

Ethernet 16

Services and Support 18

Copyright and Agreement in Usage

All contents of this user manual are protected by the copyright laws, and M3 Mobile Co., Ltd. owns all rights related to them.

Any part of this document cannot be copied, reproduced, modified, or translated to other languages without the prior written consent of M3 Mobile.

The contents of this user manual were written based on the “current state” of the product, and the details of this manual are subject to change without the prior notice.

M3 Mobile does not provide any guarantee including the implied guarantee on the product’s characteristics in this user manual and suitability for special purposes, and any other guarantees not limited to them.

Microsoft, Windows, MS Office, Outlook, ActiveSync, Internet Explorer, Windows Logo, and Windows CE, Windows Mobile Logos are registered trademarks or trademarks of Microsoft in the USA or other countries. The license for OEM of Microsoft products was provided by Microsoft Licensing Inc., subsidiary company of Microsoft.

M3 ORANGE Single-Slot Cradle is a trademark of M3 Mobile.

All product names and services used in the manual and product are company names, service marks, trademarks, or registered trademarks of the corresponding right owners.

Notice – General Notices

The contents of this user manual were made based on the “current state” of the product, and this manual may contain technical and editing errors or omissions

When separate application programs are developed and provided by the product providers using the product, refer to the program user’s manual provided by the product providers.

The companies that produce separate application programs besides the basic installation programs must include the contact telephone number for inquiring about these programs on the product, program, or product box separately when distributing the equipment.

M3 Mobile does not guarantee the quality of the programs produced by third party software companies installed after the release from the factory of M3 mobile.

M3 Mobile may request programs from the program manufacturers in order to guarantee the quality of the product to meet the requests of mobile network service providers.

Notice – Revision History

Version 2.2 – March, 2013

- Change address and M3 Mobile technical support webpage

Version 2.1 – June, 2012

Version 2.0 – Jan, 2011

- First release of separate user manual for standard cradle.

Version 1.0 – May, 2010

- First release of printed version.

Warnings and Cautions for Safety

Before You Begin

Please read the warnings and cautions for safety carefully before you begin to avoid any damages or accidents. If you are not certain on any information given in this manual, please contact your supplier.

Customer Cautions

If the device is lost or stolen, then immediately report the incident to the service provider.

Refrain from using the device while driving.

When service for the product is required, request services through the designated service center of M3 Mobile.

For inquires about the application programs and other work programs besides the hardware and the basic installation, directly contact the corresponding program manufacturers.

Do not use any battery adapter or accessories other than the designated ones provided with the product.

Free warranty service may not be allowed if failures occur due to unauthorized use or misuse of the product.



Warnings and Cautions for Safety – Cntd.

Cautions in Carrying and Storing

Do not use the product in high temperature or high humidity environments as this may quickly cause damage to the product.

The product was designed to be suitable for work environments, but avoid impacts or dropping the product. This may cause fatal damage to the product.

Fully charge the battery before using the product for the first time.

Do not modify the product

Do not try to modify the product by any means.

Modifications may cause fire, injury, electric shock, or serious damage to the equipment and users.

The warranty service is not provided for troubles due to unauthorized modification.

1. Checklist

Thank you for selecting Single-Slot Standard Cradle. This guide will help you on basic usage of the product. Please check if all the contents shown below are nearby. Power supply and/or USB cable is needed for charging and ActiveSync.



Cradle



Power Supply



USB Cable

If you don't have everything, contact your supplier immediately.



Caution

Please use the correct power supply provided by M3 Mobile. Compatibility with other power supply source is not guaranteed.

2. Usage – Description

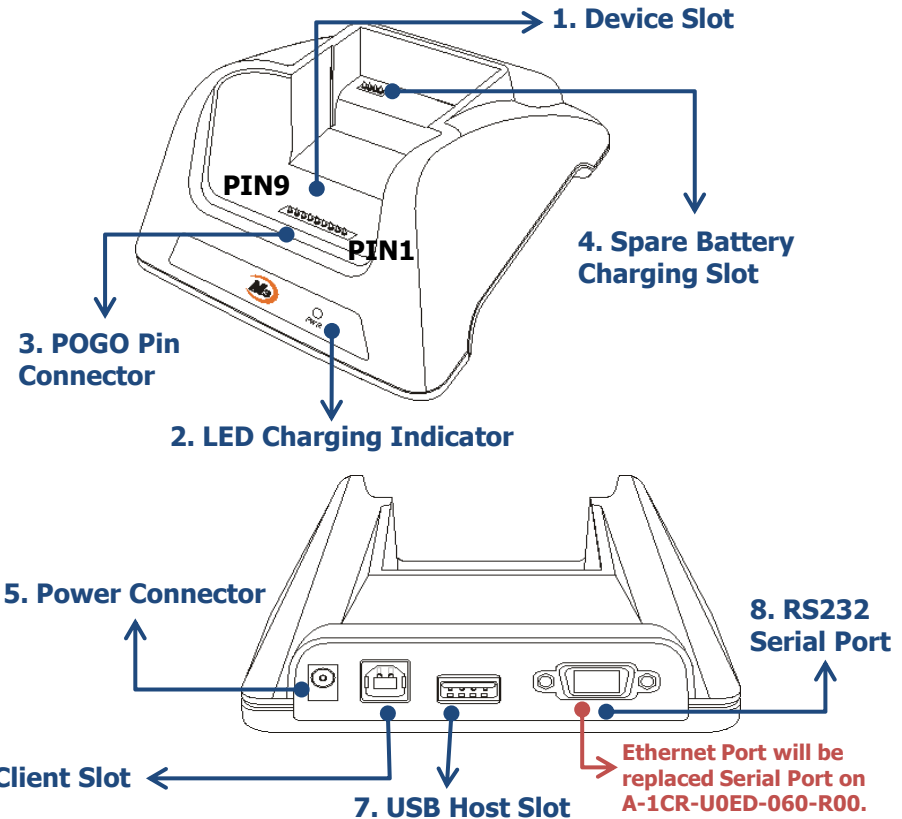
A-1CR-US0D-060-R00 is the **basic cradle** with Serial port that comes with the PDA in the box as a default.

A-1CR-U0ED-060-R00 has **Ethernet** (back of the cradle) feature.

Description

Refer to next images ([A-1CR-US0D-060-R00](#)) for Single-Slot Cradle parts and descriptions.

- 1. Device Slot** – A PDA slides into the slot for charging, data transfer or ActiveSync connection.
- 2. LED Charging Indicator** – Charging status of an spare battery is displayed. Refer to No. 4. Note that the LED on the PDA will show the charging status of PDA.



2. Usage – Description continued.

Charging LED description

LED Color	Meaning
RED	The spare battery is being charged.
GREEN	The spare battery is fully charged.

3. POGO Pin Connector – Used for data communication with PDA such as ActiveSync.

1	2	3	4	5	6	7	8	9
USB_DN	USB_DP	EX_USBHP	GPSDET	DM_RXD	DM_TXD	DM_DET	GND	+5V

4. Spare Battery charging Slot – Spare battery can be charged from this slot.

5. Power Connector – AC power supply connector. Make sure the authentic power supply is used.

6. USB Client slot – USB client slot is used to connect to a PC.

7. USB Host slot – USB host function is available.

8. RS232 Serial Port – This RS232 port enables serial communication.

2. Usage – Specification

Model		M3 ORANGE
Compatible PDA(s)		M3 ORANGE only
Charging LED		<ul style="list-style-type: none">▪ Red - Charging▪ Green - Fully charged
Spare Battery Slot		Charging Slot (3300mAh Battery, 4.2V/1A)
Adapter Input		AC 100 ~ 240V, 50~60Hz
Adapter Output		DC 5.0V / 5A
Power Connector		DC Jack Type
USB	Host	Supported
	Client	Supported
Serial Port		Supported (A-1CR-US0D-060-R00 only)
Ethernet Port		RJ-45 Ethernet Port (A-1CR-U0ED-060-R00 only)
Cradle/PDA connector		9 PIN POGO Connector. Refer to 'Usage – Description No.3 Pin Connector' for pin I/O information.

2. Usage – Specification

Ethernet Specification

- RJ-45 Ethernet Port
- IEEE 802.3/802.3x 10Base-T /100Base-Tx compliant
- IEEE 802.3x flow control
- Auto-Negotiation for 10Base-T and 100Base-Tx

Ethernet Port LED Description

LED Color	Meaning
Flashing GREEN	Accessing to the switch/hub
Solid GREEN	Connection is established
Flashing AMBER	Data transmission



Caution

Inserting and ejecting PDA in the Ethernet cradle reasonably quickly may cause the Ethernet LED unlighted. This happens due to the time taken to load and unload LAN driver in PDA. If this happens, please reset the PDA.

3. FAQ and Troubleshoot – Charging

This chapter provides frequently asked questions and its corresponding answers.

Charging

Q1. How to charge PDA using the cradle?

Step 1. Plug in the AC adapter plug to wall jack and DC Jack to power connector of cradle.

Step 2. Insert the PDA to device slot to start charging the PDA.

Q2. Charging Status

Charging status of the PDA and the spare battery is indicated by LEDs.

LED charging indicator on the cradle (No. 2 in description) indicates the charging status of the spare battery.

LED on upper left corner indicates the charging status of the battery attached to the PDA.



Caution

1. Use the correct AC adapter with 5.0V, 5A output provided by M3 Mobile.
2. Incongruent change of battery can cause the explosion.
3. When attached battery is completely discharged, plug charger to main body, then reset the device to check if the screen is back on. Leave at least for 10 min in charging state before use.

3. FAQ and Troubleshoot – PC Connection

PC Connection

Q1. How to connect to PC

M3 cradle product range support charging and USB connection. You must have **Microsoft ActiveSync** or **Windows Mobile Device Manager** (for Windows Vista and 7) installed.

Step 1. Connect to USB Client Port.

Step 2. Supply power to the cradle using the proper AC adapter.

Step 3. Connect PC and the cradle using the provided USB cable.

Step 4. Insert the PDA to the device slot. Your PC will automatically detect the new device.

Q2. PDA is not recognized in ActiveSync or Mobile Device Center.

A2-1. Check if the USB cable is properly connected on both sides.

A2-2. Check if the ActiveSync or Mobile Device Manager on your PC is compatible with the OS of the PDA. For more information, visit <http://www.microsoft.com/canada/windowsmobile/wm07/devicecenter/troubleshooting.mspx>

3. FAQ and Troubleshoot – Serial Comms.

Serial Communication

Q1. Cannot use Serial communication through cradle. What should I check?

A1-1. Check if the serial cable is properly connected on both sides.

A1-2. Check if necessary driver(s) installed on the PC or equivalent hardware.

Q2. Can Serial communication and ActiveSync be used simultaneously?

A2-1. Yes. It can be used at the same time.



Note Ethernet connection is *only* available in **A-1CR-US0D-060-R00** model.

3. FAQ and Troubleshoot – Serial Comms.

Serial Communication

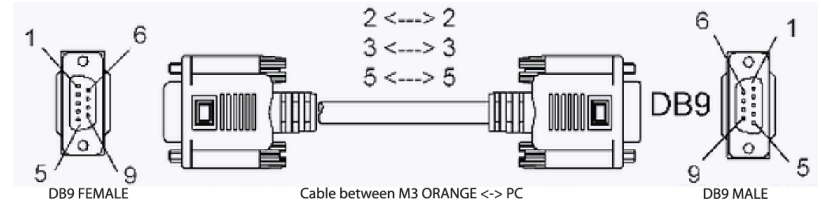
Q3. What's the PIN Out from M3 ORANGE's serial port?

A3-1. Please refer following table for detailed information.

PIN Out	
2	RX
3	TX
5	GND

Q4. What's the DB9 connector's pin arrangement?

A4-1. Please refer diagram below for detailed information.



Note Serial port can be used, while using serial communication via WMDC(Windows Mobile Device Center).

3. FAQ and Troubleshoot – Ethernet

Ethernet

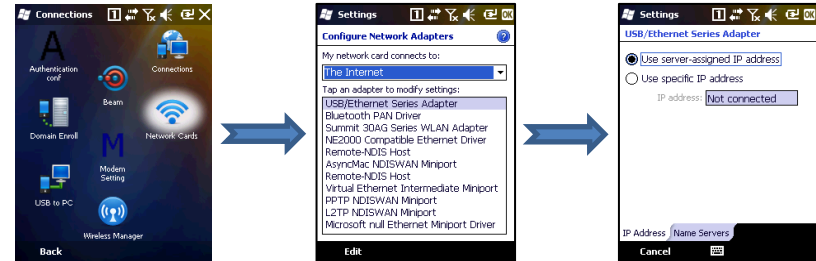
Q1. Cannot use Ethernet

A1-1. Check if the LAN cable is properly connected to the cradle and LAN output port AND AC power supply is connected.

A1-2. Check if the Ethernet uses Static IP or DHCP. Then, check if the PDA's network adapter is configured accordingly. Refer to right images for static IP configurations.

A1-3. If all above methods does not solve your issue, contact your supplier.

Static IP Configuration Windows Mobile 6.5



3. FAQ and Troubleshoot – Ethernet

Ethernet Continued.

Q2. Can Wi-Fi be used after the PDA is taken from the cradle?

A2-1. Yes, Wi-Fi can be used if WLAN is turned on and correctly configured. Using Ethernet cradle will not effect on Wi-Fi connection.

Q3. Ethernet LED is not turning on.

A3-1. Inserting and ejecting PDA in the Ethernet cradle reasonably quickly might cause the Ethernet LED unlighted. This happens due to the time taken for loading and unloading LAN driver in PDA. If this happens, please reset the PDA.
Using Static IP will decrease the chance of getting into this situation.



Note Ethernet connection is [only available in A-1CR-U0ED-060-R00](#) model.

Services and Support

Should you require any services or technical support on M3 Mobile's products, contact your supplier or visit M3 Mobile technical support webpage <http://itc.m3mobile.net>. Desired or relevant manuals can be downloaded from **Knowledge Center** or **FAQ** in technical support webpage.

For DOA or RMA, please send the defective product to suitable address **AFTER** consulting the supplier.

M3 Mobile Co., Ltd.

Headquarter

M3 Bldg., 735-45,
Yeoksam-Dong, Gangnam-Gu,
Seoul, 135-080, Korea
Tel: +82 2 574 0037(Ext.4) Fax: +82 2 556 0155

Service Center

Chun-ui Techno Park 201-610,
202, Chun-ui Dong, Won-Mi gu, Buchoen,
Gyeonggi Do, Korea , 420-857
Tel: +82 32 623 0037 Fax: +82 32 655 0884

Thank you for choosing M3 Mobile's product!